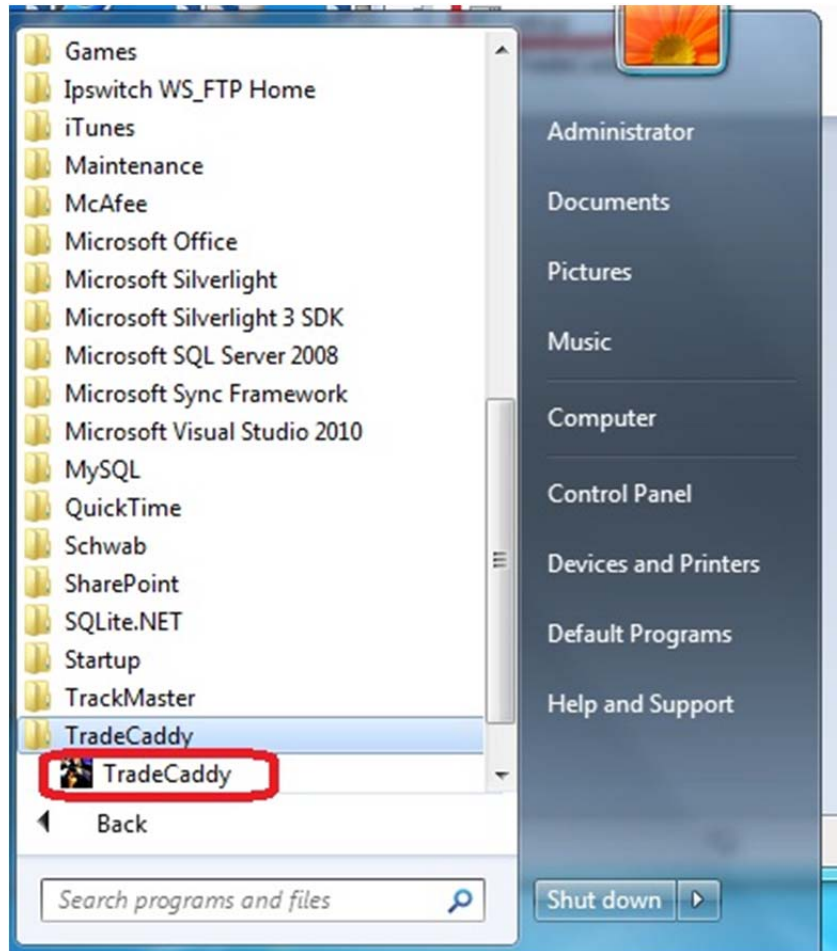
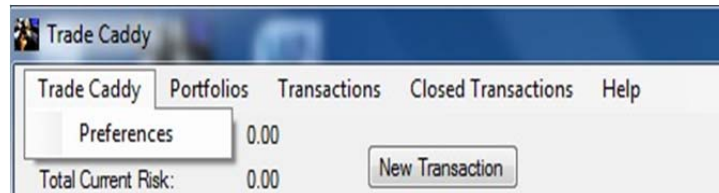


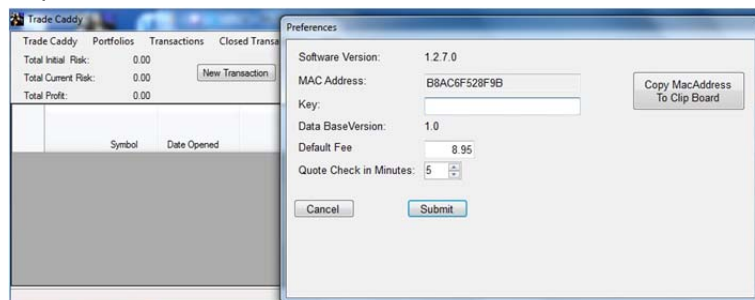
1. To Start program got to start menu, programs



2. To Register Program to gain full functionality
 - a. Click on the "MyStocks" Menu Item and then "Preferences"



- b. Copy your Mac address to the clipboard by pressing the "Copy Mac Address to Clipboard" button

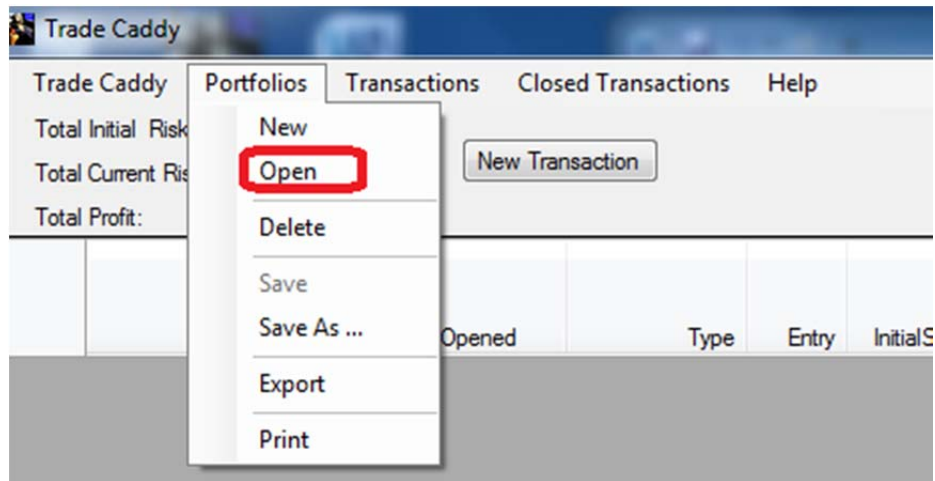


- c. Paste the text in clipboard to an your email by pressing shift-Insert. Should see something like this

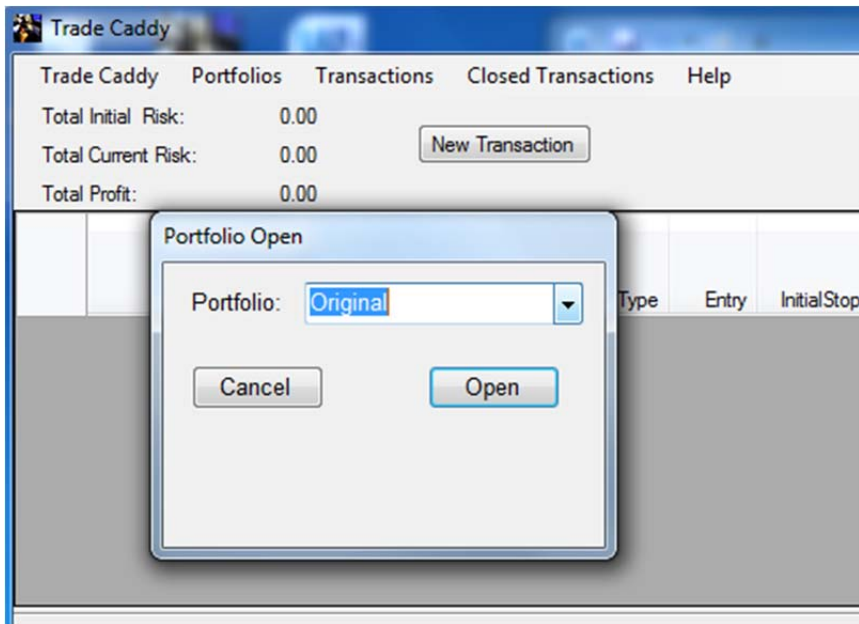
MacAddress: B8AC6F528F9B

- 3. To Click open an existing Portfolio

- a. Click on Open Portfolio



- b. Select a Portfolio from Drop down and press "Open"



- c. Portfolio name will display in Program Title after Program name

Trade Caddy - Original

Trade Caddy Portfolios Transactions Closed Transactions Help

Total Initial Risk: 4,000.00
 Total Current Risk: 12,584.00
 Total Profit: 17,584.00

	Symbol	Date Opened	Type	Entry	InitialStop	InitialRisk	CurrentStop	CurrentRisk	Shares	Total Initial Risk	1X	2X	3X	Quote	Profit/Loss	Current Risk Per Share	Total Current Risk	Fee
▶	AAPL	2011-03-30	Long Stock	323.000	320.00	3.00	340.00	-17.00	400	1,200.00	326.00	329.00	332.00	348.55	10,220.00	8.55	3,420.00	8.95
	DOW	2010-12-04	Long Stock	25.730	23.00	2.73	23.50	2.23	300	819.00	28.46	31.19	33.92	37.30	3,471.00	13.80	4,140.00	8.95
	HPQ	2010-11-14	Long Stock	42.500	38.00	4.50	39.00	3.50	300	1,350.00	47.00	51.50	56.00	41.26	-372.00	2.26	678.00	8.95
	HRS	2010-11-12	Long Stock	44.570	43.00	1.57	43.50	1.07	300	471.00	46.14	47.71	49.28	49.32	1,425.00	5.82	1,746.00	8.95
	TXRH	2010-12-01	Long Stock	13.900	12.50	1.40	13.00	0.90	400	560.00	15.30	16.70	18.10	16.77	1,148.00	3.77	1,508.00	8.95
	UN	2010-12-06	Long Stock	27.000	28.00	-1.00	28.50	-1.50	400	0.00	0.00	0.00	0.00	31.23	1,692.00	2.73	1,092.00	8.95

Quotes updated at 04:07

- d. If all the columns do not fit in the window, increase window size by clicking on bottom right corner with left mouse button and increase size of window. You can also use horizontal scroll bar on grid to bring columns into view. Vertical scroll bar on grid can be used to bring rows into view

Trade Caddy - Original

Trade Caddy Portfolios Transactions Closed Transactions Help

Total Initial Risk: 4,000.00
 Total Current Risk: 12,584.00
 Total Profit: 17,584.00

	Symbol	Date Opened	Type	Entry	InitialStop	InitialRisk	CurrentStop
▶	AAPL	2011-03-30	Long Stock	323.000	320.00	3.00	340.00
	DOW	2010-12-04	Long Stock	25.730	23.00	2.73	23.50
	HPQ	2010-11-14	Long Stock	42.500	38.00	4.50	39.00
	HRS	2010-11-12	Long Stock	44.570	43.00	1.57	43.50
	TXRH	2010-12-01	Long Stock	13.900	12.50	1.40	13.00
	UN	2010-12-06	Long Stock	27.000	28.00	-1.00	28.50

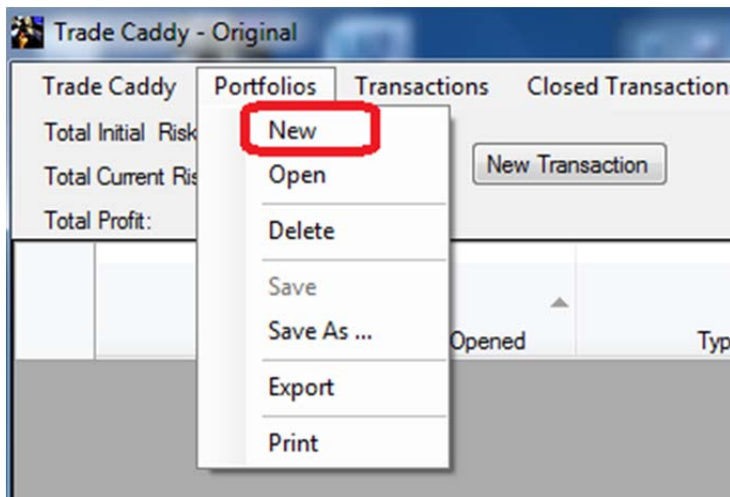
Quotes updated at 04:07

e. Column Definitions

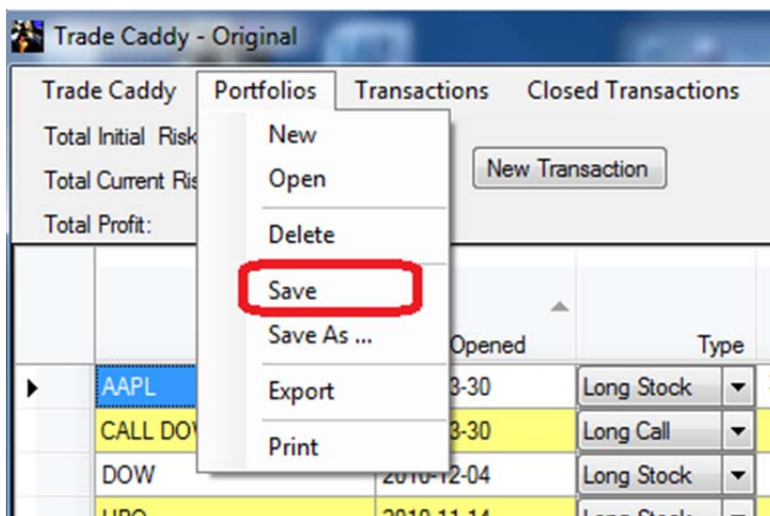
Symbol	Date Opened	Type	Entry	Initial Stop	Initial Risk	Current Stop	Current Risk	Shares	Total Initial Risk	1X	2X	3X	Quote	Profit/Loss	Current Risk Per Share	Total Current Risk	Fee
AAPL	2011-03-30	Long Stock	323.000	320.00	3.00	340.00	-17.00	400	1,200.00	326.00	329.00	332.00	348.55	10,220.00	8.55	3,420.00	8.95
DOW	2010-12-04	Long Stock	25.730	23.00	2.73	23.50	2.23	300	819.00	28.46	31.19	33.92	37.30	3,471.00	13.80	4,140.00	8.95
HPQ	2010-11-14	Long Stock	42.500	38.00	4.50	39.00	3.50	300	1,350.00	47.00	51.50	56.00	41.26	-372.00	2.26	678.00	8.95
HRS	2010-11-12	Long Stock	44.570	43.00	1.57	43.50	1.07	300	471.00	46.14	47.71	49.28	49.32	1,425.00	5.82	1,746.00	8.95
TXRH	2010-12-01	Long Stock	13.900	12.50	1.40	13.00	0.90	400	560.00	15.30	16.70	18.10	16.77	1,148.00	3.77	1,508.00	8.95
UN	2010-12-06	Long Stock	27.000	28.00	-1.00	28.50	-1.50	400	0.00	0.00	0.00	0.00	31.23	1,692.00	2.73	1,092.00	8.95

- i. Stock – the stock symbol or Call Option
- ii. Date Acquired – date transaction was opened
- iii. Type of Transaction
 1. Long Stock
 2. Short Stock
 3. Long Call
 4. Short Call
 5. Long Put
 6. Short Put
- iv. Entry -the price at which you purchased the stock/call or sold the stock/call short
- v. Initial Stop -your initial stop on the trade
- vi. Initial Risk -Calculation
 1. Long -(Entry – Initial Risk)
 2. Short – -(Entry -Initial Risk)
- vii. Current Stop -Enter your current stop here. This should be your initial stop, then altered to reflect any changes in stop as the trade continues.
- viii. Current Risk – Calculation for Stocks Only
 1. Long -(Entry – Current Risk)
 2. Short – -(Entry - Current Risk)
- ix. Shares -shares or contracts you took for the trade
- x. Total Risk – Calculation
 1. Long -(Entry – Initial Risk) * shares
 2. Short – -(Entry -Initial Risk) * shares
 3. Price of option contracts multiplied by 100
- xi. 1X – Calculation – One Multiple of your Original Risk.
 1. Long -(Entry + Initial Risk)
 2. Short -(Entry -Initial Risk)
- xii. 2X – Calculation – Two Multiples of your Original Risk.
 1. Long -(Entry + (2 * Initial Risk))
 2. Short -(Entry -(2 * Initial Risk))
- xiii. 3X – Calculation – Three Multiples of your Original Risk.
 1. Long -(Entry + (3 * Initial Risk))
 2. Short -(Entry -(3 *Initial Risk))
- xiv. Quote -for stocks quote retrieved from yahoo on a 15 minute delayed bases. Quotes are not retrieved for options
- xv. Profit/Loss -only calculated for stocks
 1. Long -(Quote -Entry) * shares
 2. Short -(Entry -Quote) * shares
- xvi. Current Risk Per share

1. Long $-(\text{Quote} - \text{Current Risk})$
 2. Short $-(-(\text{Quote} - \text{Current Risk}))$
 3. Not Calculated for Options
- xvii. Total Current Risk
1. Long $-(\text{Quote} - \text{Current Risk}) * \text{shares}$
 2. Short $-(-(\text{Quote} - \text{Current Risk})) * \text{shares}$
 3. Not calculated for options
- xviii. Fee -the transaction cost on opening of the transaction. Default Fee can be set in preferences. Default fee will be used when you add a transaction and close a transaction. You can edit the value if the default is incorrect.
- f. Set called 'Original' comes with installed version for your initial use
- i. You can use it
 - ii. You can delete it
4. You can start a New Portfolio at any time by Pressing Portfolio, New Portfolio

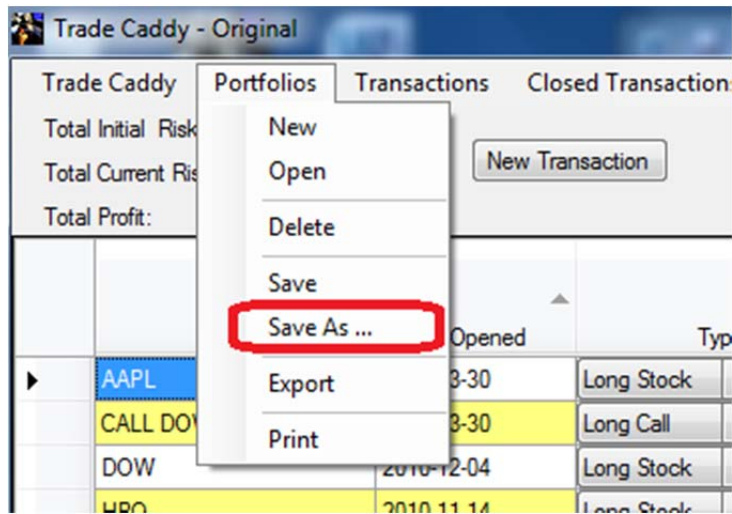


5. You can Save the currently load Portfolio by pressing Portfolio, Save Portfolio

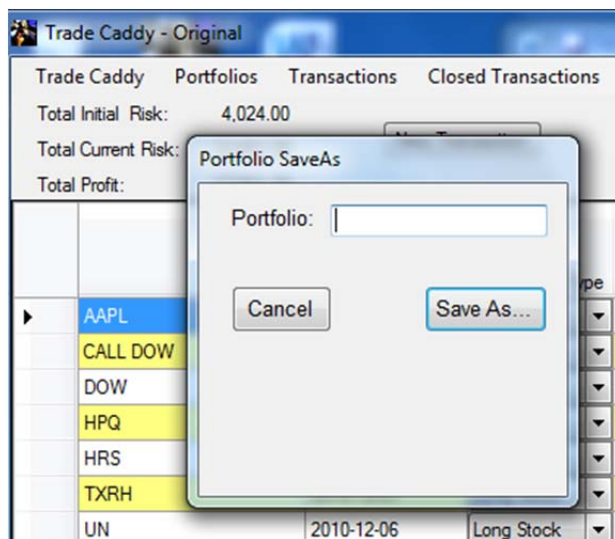


- a. Automatically Saves Portfolio Under the name used to Open the Portfolio

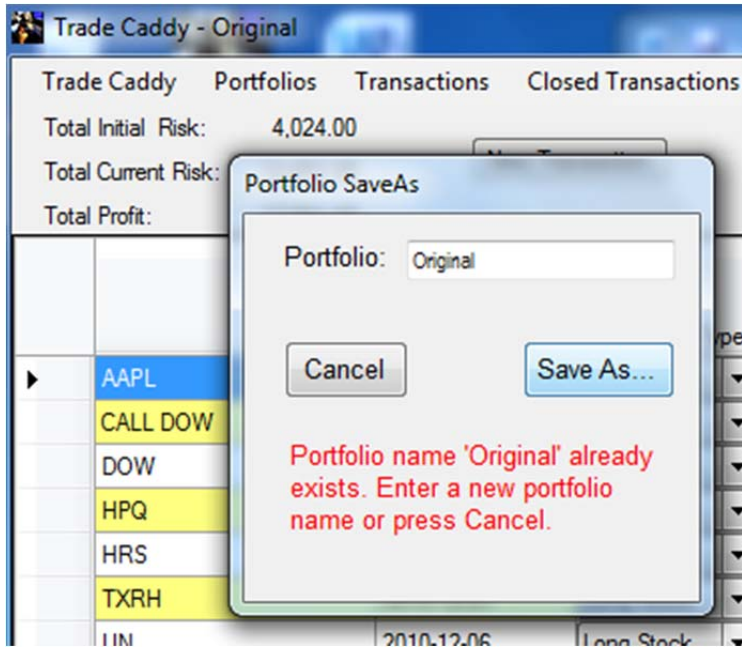
6. You can Save the currently loaded Portfolio or a New Portfolio set by pressing File, Save Portfolio As...



- a. Will prompt you with a Dialog which allows you to enter a new name for the Portfolio

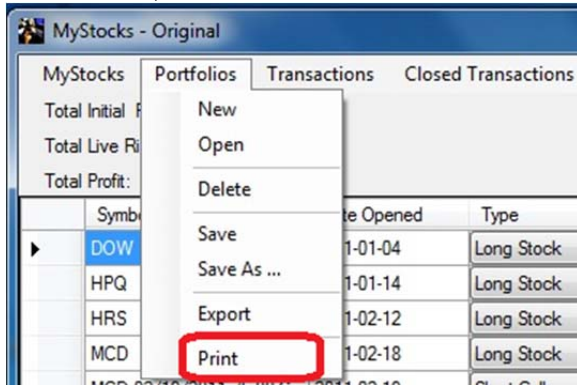


- b. After "Save As" a Portfolio, the name will display in title after Program Name
c. Will produce an error if the name you enter already exists



7. You can print the current Portfolio

a. Portfolio, Print



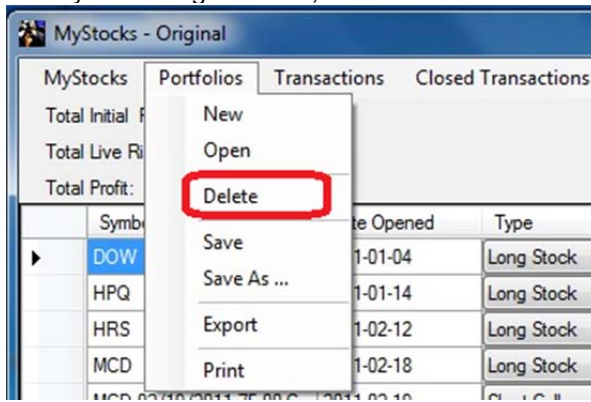
b. Print Dialogue will appear

i. Landscape mode will automatically be chosen

c. Sample Output

8. You can delete a Portfolio

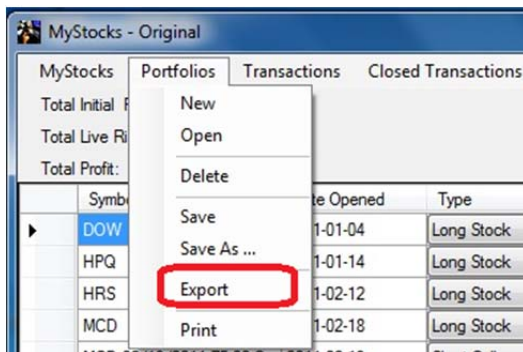
a. By Choosing Portfolio, Delete



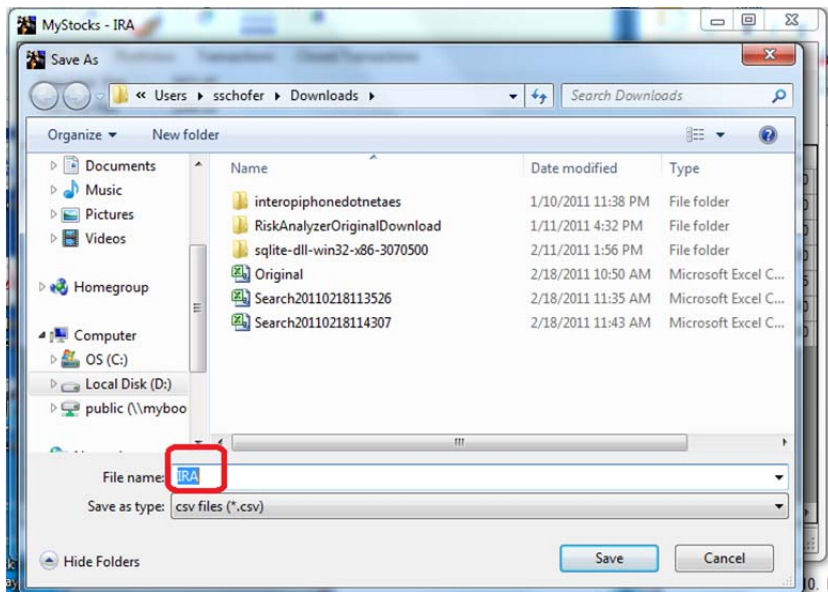
b. Select the Portfolio you want to delete

9. You can export to a comma delimited file the currently loaded portfolio

a. Select Portfolio, Export Portfolio



b. Save As Dialog appears. The name will be the name of the currently select portfolio. You can change the file name or the directory where the file will be saved

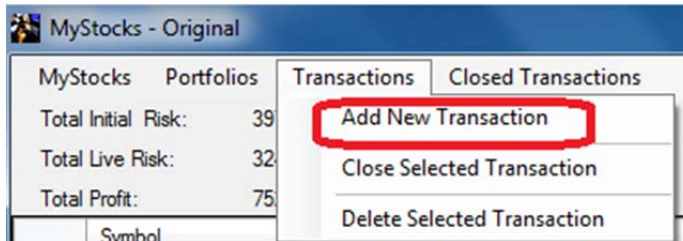


c. Resulting file can be opened in any spreadsheet program

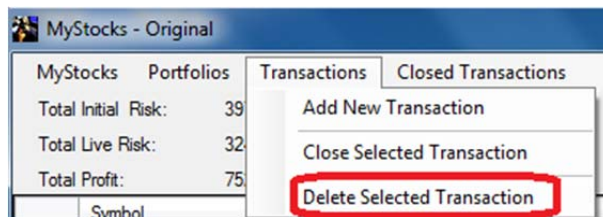
The screenshot shows the Microsoft Excel application window with the file 'IRA - Microsoft Excel' open. The spreadsheet contains the following data:

	A	B	C	D	E	F	G	H	I	J	K	L	M	N
1	Symbol	DateOpen	Type	Price	Initial Sto	Initial Risk	Live Stop	Live Risk	Shares	Total Risk	1X	2X	3X	Open Fee
2	DOW	1/4/2011	Long Stoc	25.73	23	2.73	23.5	2.23	300	819	28.46	31.19	33.92	8.95
3	HPQ	#####	Long Stoc	42.5	38	4.5	39	3.5	300	1350	47	51.5	56	8.95
4	HRS	#####	Long Stoc	44.57	43	1.57	43.5	1.07	200	314	46.14	47.71	49.28	5.97
5	MCD	#####	Long Stoc	75.76	74	1.76	74.5	1.26	300	528	77.52	79.28	81.04	8.95
6	MCD 02/11	#####	Short Call	1.1	1.3	0.2	1.35	0.25	5	100	0.9	0.7	0.5	8.95
7	TXRH	1/1/2011	Long Stoc	13.9	12.5	1.4	13	0.9	400	560	15.3	16.7	18.1	8.95
8	UN	2/6/2011	Short Stoc	27	28	1	28.5	1.5	300	300	26	25	24	6.71

10. Menu item Transactions, Add Transaction will add a new row to Grid so you can enter a new transaction



11. Menu item Transactions, Delete Selected Transactions will remove the currently selected Transactions from the Grid. Portfolio is not updated until you press Save Portfolio or Save Portfolio As... to save under a new stock set name. Do not use if you want to have a record of transaction. Use "Close Transaction" instead



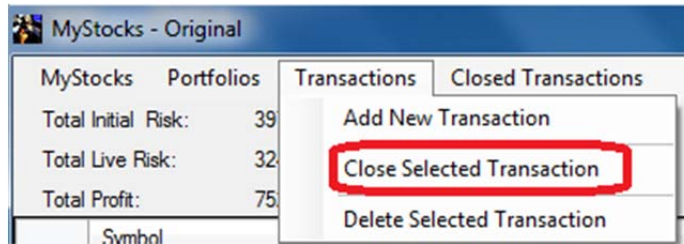
- a. You can select more than one stock by holding down "ctrl" key and clicking on a stock.

The screenshot shows the 'MyStocks - IRA' window. The 'Transactions' menu is open. The window displays summary statistics: Total Initial Risk: 3971.00, Total Live Risk: 3246.00, and Total Profit: 7520.00. Below the statistics is a grid of transactions with the following data:

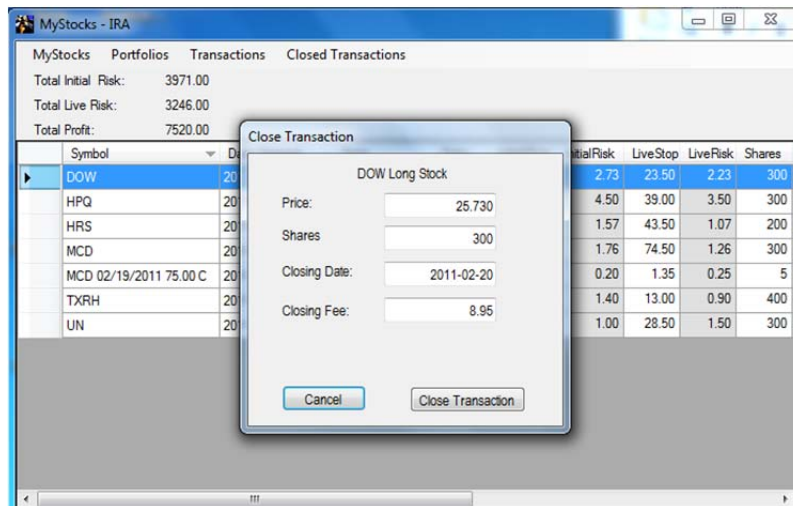
Symbol	Date Opened	Type	Entry	InitialStop	InitialRisk	LiveStop	LiveRisk	Shares
DOW	2011-01-04	Long Stock	25.730	23.00	2.73	23.50	2.23	300
HPQ	2011-01-14	Long Stock	42.500	38.00	4.50	39.00	3.50	300
HRS	2011-02-12	Long Stock	44.570	43.00	1.57	43.50	1.07	200
MCD	2011-02-18	Long Stock	75.760	74.00	1.76	74.50	1.26	300
MCD 02/19/2011 75.00 C	2011-02-19	Short Call	1.100	1.30	0.20	1.35	0.25	5
TXRH	2011-01-01	Long Stock	13.900	12.50	1.40	13.00	0.90	400
UN	2011-02-06	Short Stock	27.000	28.00	1.00	28.50	1.50	300

12. Close Selected Transaction will remove or update the currently selected transaction. In addition a record of the entire transaction, purchase and sell, will be kept in Closed Transactions

- a. Select Transaction to close and choose Transactions, Close Selected Transaction



b. A dialog will appear

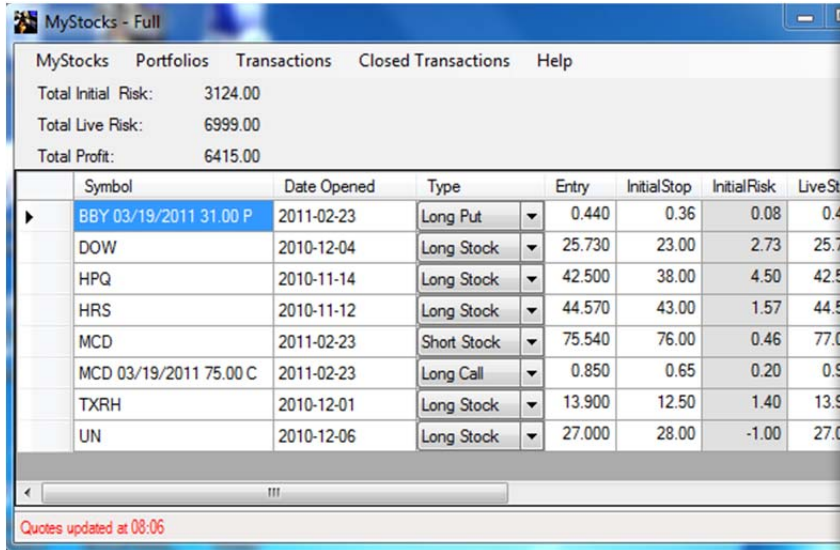


- i. Closing Date - will by default be completed with current date. You can change to date transaction was closed in its entirety or partial
- ii. Shares - will have the amount of shares on contracts in position. You can change if you are only liquidating part of you holdings
- iii. Price - will have price to open transaction, change to price used to close transaction
- iv. Closing Fee - fee associated with closing transaction. Will be populated with the Default Fee set in Preferences.
- v. When you press submit
 1. entry made in closed transactions with open price, open date, close price, close date and number of shares in closing transaction. You can view "Closed Transactions" by choosing "Closed Transactions", "Search"
 2. if the number of shares in closing transactions equal number of share in opening transaction, entry will be removed from portfolio
 3. if number of shares in closing transaction is less than number of shares in opening transaction, number of shares or contracts in the entry in portfolio will be adjusted. The Opening fee will also be distributed between the shares in the partial closing transaction and the remaining shares

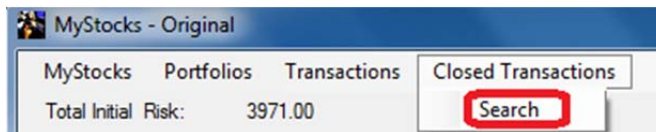
13. Sorting Column Heading

- a. You can sort the Portfolio by symbol by clicking on any column Heading
- b. Clicking Again reverse the sort, Arrow shows direction of sort

14. When the timer fires to update the Current Price column, a message will appear in Status Bar that Current Price(Quotes) are updating

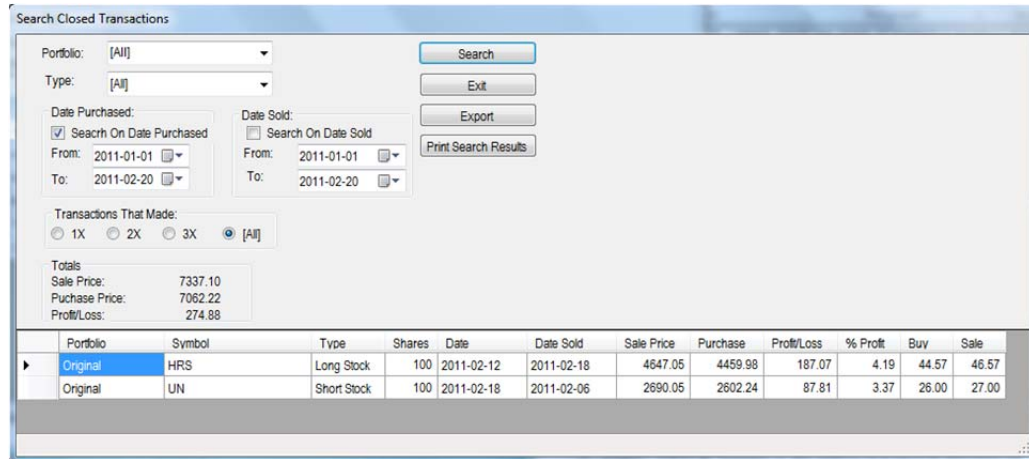


15. Menu Item “Closed Transactions”, “Search brings up a window which allows you to search/examine your closed transactions.



- a. You can restrict your view of closed transaction by selecting on or more of the following. If you make no change to the initial criteria all closed transaction will be returned. You can also sort the results by clicking on any column heading except in the grid.

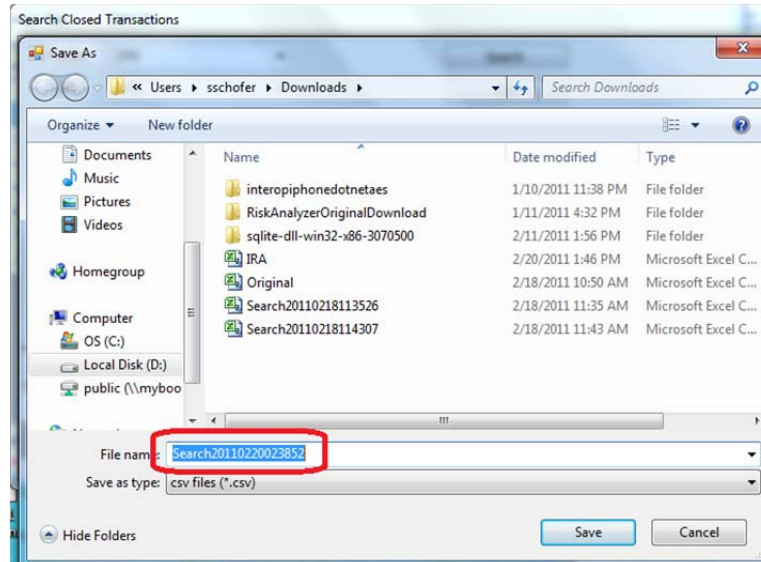
- i. Portfolio - choose a portfolio to search or “[All]” to search all closed transactions in all portfolios
 - ii. Type - choose a type of transaction to search or “[All]” to search all transaction types
 - iii. Date Purchased - check “Search On Date Purchased and select the date range to search to restrict returned transactions by Purchase Date
 - iv. Date Sold - check “Search On Date Sold and select the date range to search to restrict returned transactions by Date Sold
 - v. Transactions that made- restrict returned closed transactions by the transaction that made
 1. 1X - where profit per share or contact is positive and greater than the absolute value of entry price - initial risk
 2. 2X - where profit per share or contact is positive and is greater than the absolute value of (entry price - initial risk) * 2
 3. 3X - where profit per share or contact is positive and greater than the absolute value of (entry price - initial risk) * 3
- b. Search Button - will return the closed transactions that meet all of the current criteria.
Example restricted by date purchased



- c. Print Button - will allow you to print the Closed Transactions in the Grid(results of last search)

Portfolio	Symbol	Type	Shares	Date Purchased	Date Sold	Sales Price	Purchase Price	Profit /Loss	% Profit
Original	HRS	Long Stock	100	2011-02-12	2011-02-18	4457.00	4657.00	200.00	4.49
Original	UN	Short Stock	100	2011-02-18	2011-02-06	2600.00	2700.00	100.00	3.85
Total:						7057.00	7357.00	300.00	

- d. Export - export grid(results of last search) to a comma delimited file
 - i. Dialog will appear allowing you to enter a file name and choose a directory to store the file



- ii. Resulting file can be loaded into Numbers or any other spreadsheet

	A	B	C	D	E	F	G	H	I	J	K	L
1	Portfolio	Symbol	Type	Shares	Date Purchased	Date Sold	Sale Price	Purchase Price	Profit/Loss	% Profit	Sale ea.	Buy ea.
2	Original	HRS	Long Stock	100	2/12/2011	2/18/2011	4647.05	4459.98	187.07	4.19	46.57	44.57
3	Original	UN	Short Stock	100	2/18/2011	2/6/2011	2690.05	2602.24	87.81	3.37	27	26

e. Quit - Closes the Closed Transaction window

f. Grid columns

i. Sales Price = ((Price to Buy the stock or option) * number of shares) - fee to buy stock or options

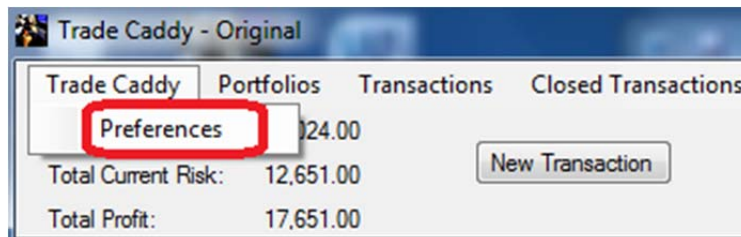
1. Price of option contracts multiplied by 100

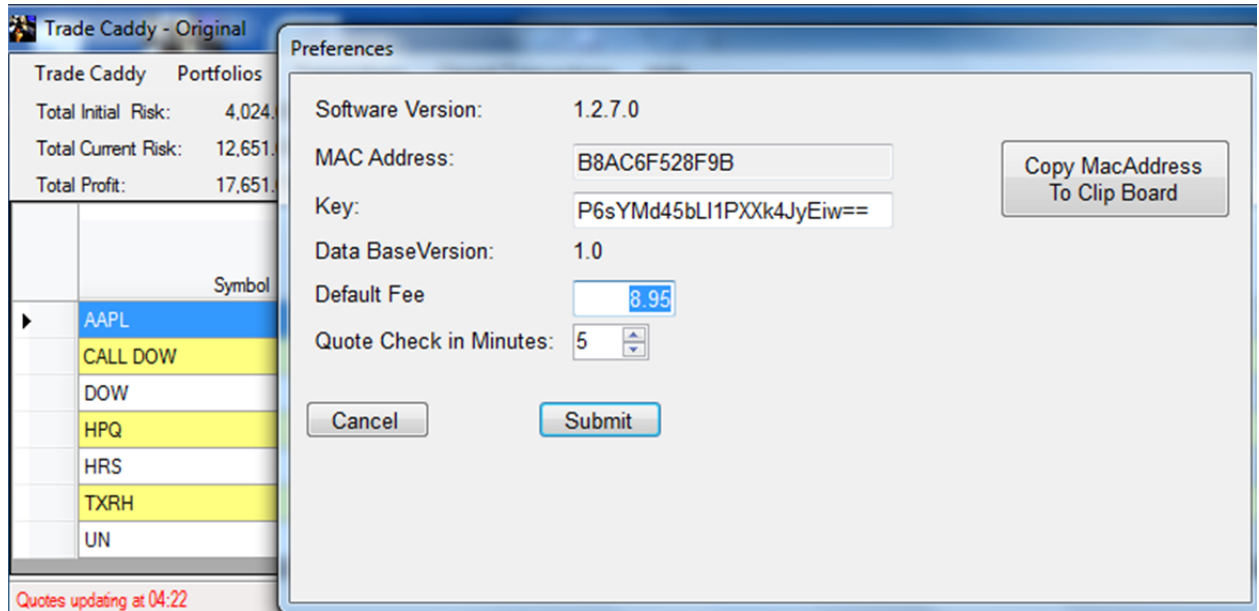
ii. Purchase Price = ((Price received on Selling the stock or option) * number of share) + fee to sell stock or options

iii. options

1. Price of option contracts multiplied by 100

16. Menu item "MyStocks", Preferences allow you to set preference





- Quotes Check in Minutes - Amount in time in minutes between Current price Update
- Default Transaction Fee - set a default fee to be used when you open or close a transaction.
- Key – sent to you after you supply your Mac Address to make your copy of the software “registered” on current computer
- Mac Address – address of your Ethernet adapter. Used to register your computer. Press “Copy Mac Address to Clip Board” to be able to paste address into an email to start registration process.
- Submit button. Press to update database with Key, Default fee and Quotes Check in minutes. Use any time you make a change to one or more of these three items.